

NEA NI2050 Initiative

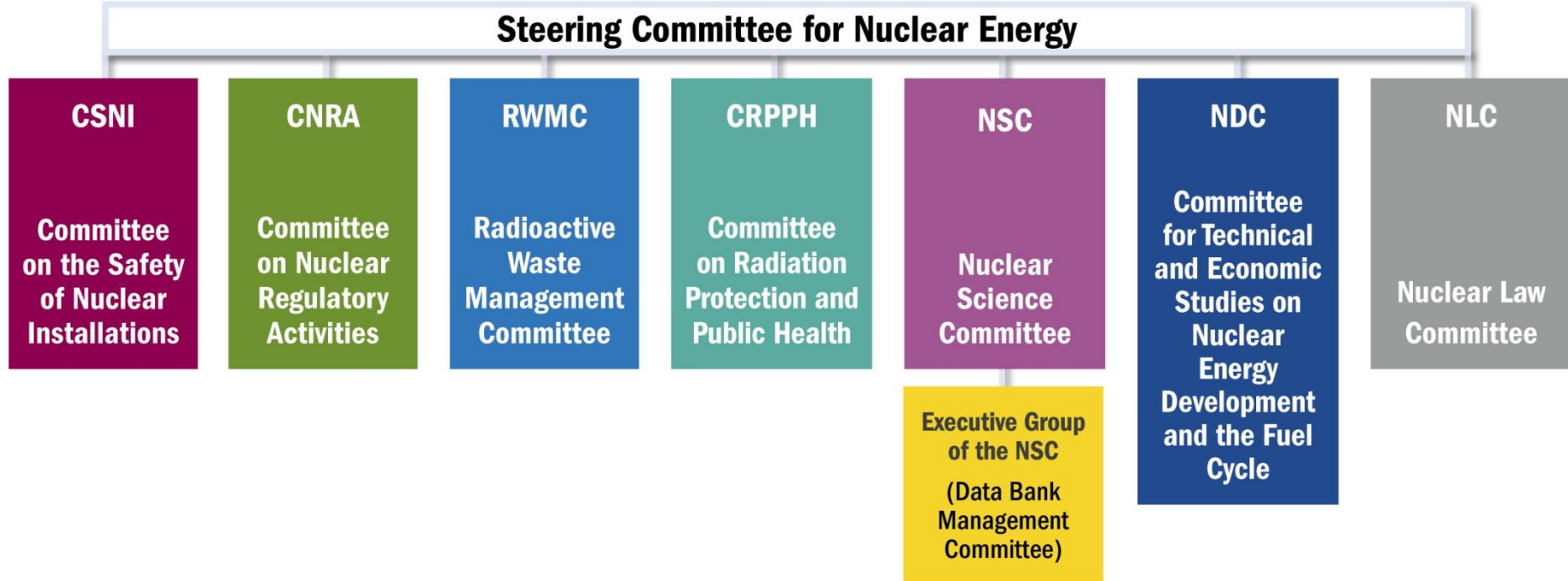
Information on NEA input for Waste Management

Inge WEBER

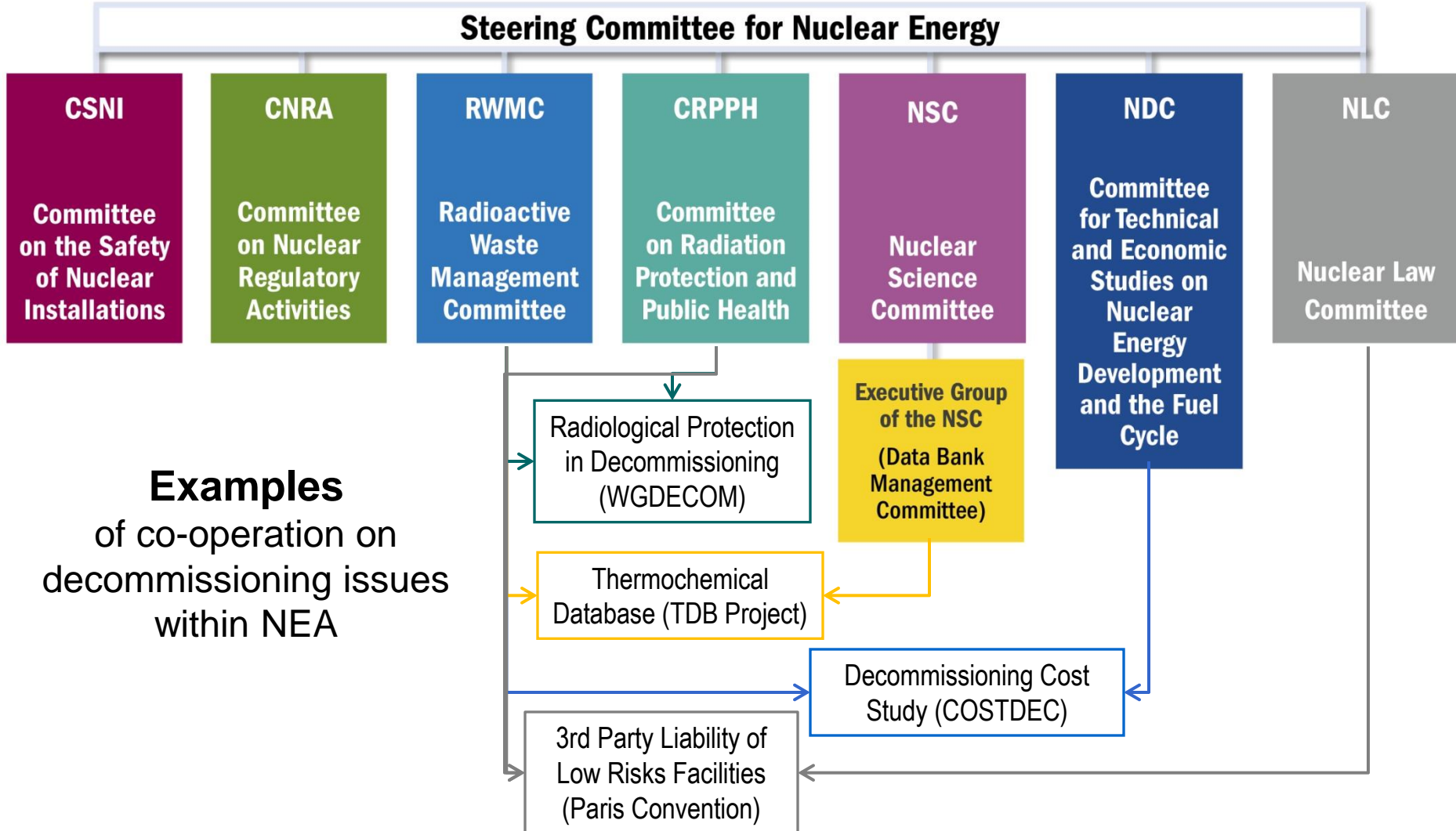
Mari GILLOGLY, Vladimir LEBEDEV, Gloria KWONG
**Division of Radiological Protection &
Radioactive Waste Management**

NI2050 Advisory Panel Meeting 20-21 June 2016

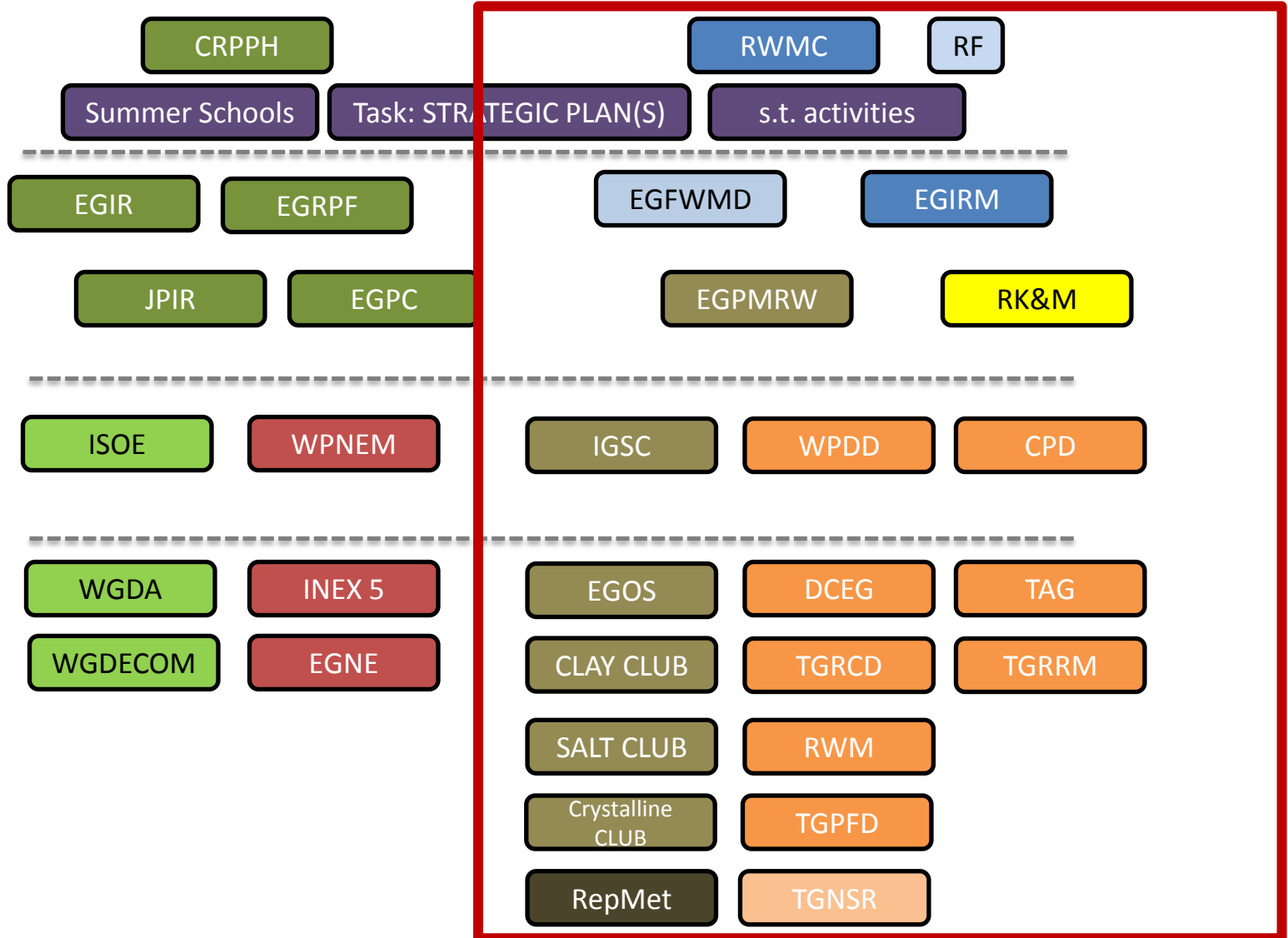
NEA committee structure



Co-operations



RAD division: committee structure



Recent Publications in RWM

[Stakeholder Involvement in Decision Making: A Short Guide to Issues, Approaches and Resources](#) (2015)

[Fostering a Durable Relationship Between a Waste Management Facility and its Host Community](#) (2015) Adding Value Through Design and Process - 2015 Edition

[How can stakeholder involvement be improved?](#) (2015)(FSC Flyer)

[Radioactive Waste Management and Constructing Memory for Future Generations](#) (2015) Proceedings of the International Conference and Debate, 15-17 September 2015, Verdun, France

[The Practice of Cost Estimation for Decommissioning of Nuclear Facilities](#) (2015)

NI2050 R&D topics vs. RWMC activities

NI2050 topics	Existing Projects / relevant work activities
1.4 Development of conditioning process for storage disposal for RW	Predisposal management of RW (EGPMRW) <ul style="list-style-type: none"> ▪ Define best practices of best interim storage of different RW types; ▪ Phase 1 until mid 2017.
5.1 & 5.3 Container materials & design	Predisposal management of RW (EGPMRW) <ul style="list-style-type: none"> ▪ Evaluate behaviours of waste containers during storage (includes corrosion studies, chemical interaction with waste, H2 generation and effects, integrity of containers etc.) ▪ Examine aging management in NEA countries;
7.1 Components demonstrating feasibility of DGR	Clay Club, Salt Club, Crystalline Club
8.1 Management of knowledge, competence & infrastructure	RK&M – focuses on essential record preservation for the post-closure phase RepMet – focuses on record management during the pre-closure phase.
9.5 Deep borehole	New IGSC initiative – to be discussed in IGSC-18 (Oct 11-13, 2016)